



SLK-CLASS ROADSTER PRICE LIST



Mercedes-Benz

Contents

- 5 Model Prices
- 6 Standard Equipment
SLK 200 KOMPRESSOR, SLK 280, SLK 350
- 8 Alloy Wheels
- 11 Optional Equipment
Suspension and Exterior, Transmission; Paint, Trim and Upholstery; Comfort; Security and Safety; In-Car Entertainment, Communications
- 15 Retailer-fit Accessories
- 17 *designo*
- 20 AMG
- 28 Technical Specifications
- 30 Road Fund Licence
- 31 Services

The journey of a lifetime begins

We are delighted that you are thinking about buying a new Mercedes-Benz.

To help you with your decision, this price list shows the costs involved as well as the standard and optional equipment available for this model.

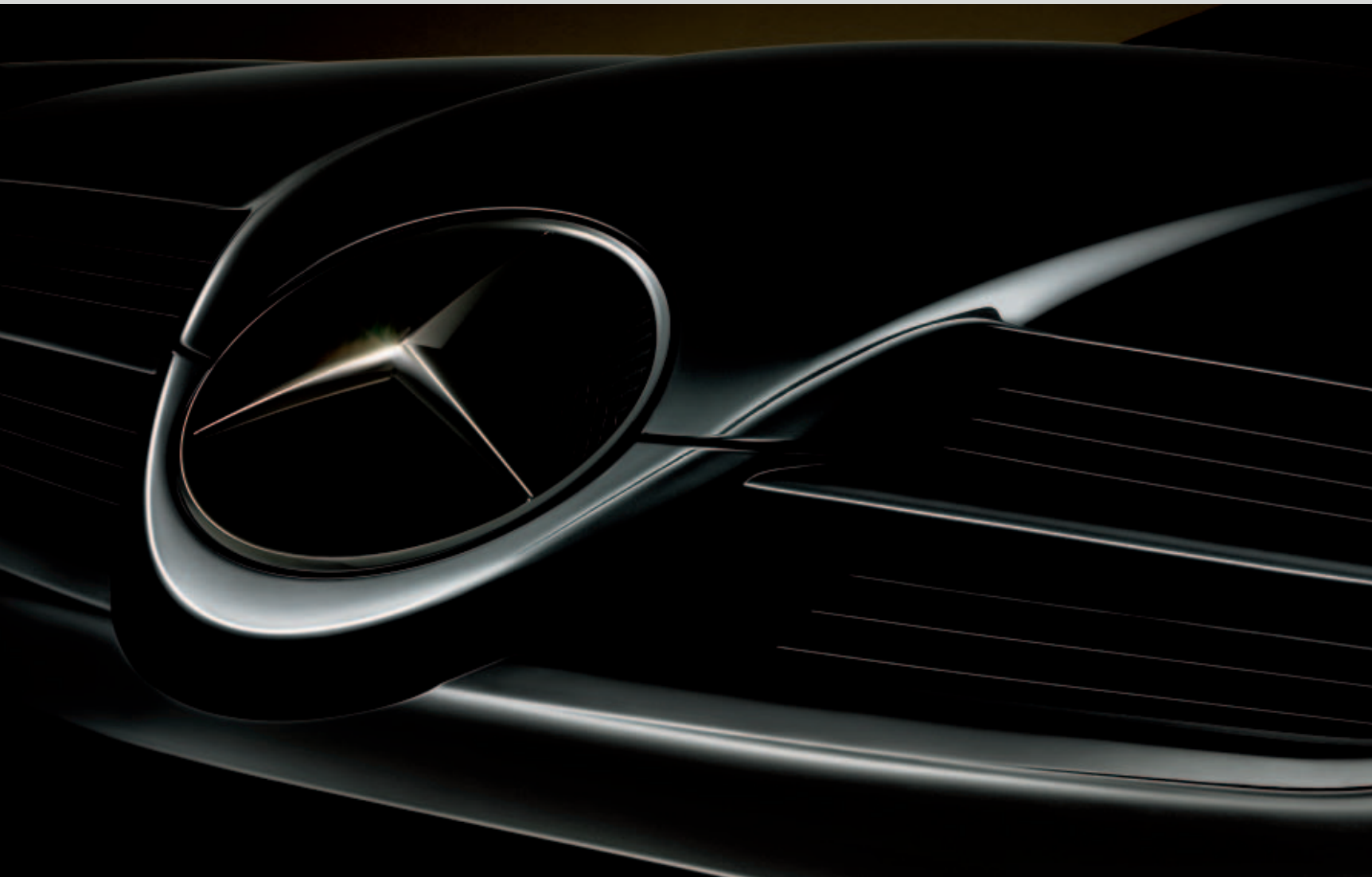
It also outlines the options with which you can create your dream Mercedes, including Retailer-fit accessories and exclusive *designo* colours and upholstery.

In addition, you'll find details of the services and benefits that are as much part of owning a Mercedes-Benz as exceptional safety or outstanding comfort and performance.

These include extensive warranties, pan-European breakdown cover, tailored financing and fixed-cost Service Contracts.

For information about all our vehicles and services, just visit your nearest Mercedes-Benz showroom. Our staff will be happy to discuss your requirements and explain everything you need to know. You can also pick up detailed brochures to read at your leisure.

Alternatively, you can find out more about Mercedes-Benz by visiting www.mercedes-benz.co.uk or calling 0800 181 121.



Model Prices SLK-Class Roadster

Technical Data		Basic Price excl VAT (£)	List Price incl VAT (£)	Road Fund Licence (£) ¹	On-The-Road Price (£) ²
MODEL					
SLK 200 KOMPRESSOR	<i>Petrol – 1,796 cc, 4-cylinder, 16-valve, 163hp</i>	23,600.00	27,730.00	190.00	28,525.00
SLK 280	<i>Petrol – 2,996 cc, 6-cylinder, 24-valve, 231hp</i>	26,093.62	30,660.00	210.00	31,475.00
SLK 350	<i>Petrol – 3,498 cc, 6-cylinder, 24-valve, 272hp</i>	29,459.57	34,615.00	210.00	35,430.00
AMG					
SLK 55 AMG	<i>Petrol – 5,439 cc, 8-cylinder, 24-valve, 360hp</i>	42,736.17	50,215.00	210.00	51,030.00

¹Maximum price for Road Fund Licence shown. Please refer to page 30 to calculate the actual Road Fund Licence applicable

²On-The-Road Price: these prices reflect the maximum Road Fund Licence and the £605.00 additional costs necessary to put your car on the road. Included are a standard UK delivery charge (£500.00 incl VAT), new vehicle registration fee (£38.00), number-plates and a full tank of fuel. VAT: list price includes VAT only, at a standard rate of 17.5%

Standard Equipment

Item

SLK 200 KOMPRESSOR
SLK 280
SLK 350

TRANSMISSION			
6-speed manual transmission with Speedtronic cruise control	●	●	●
WHEELS AND TYRES			
16" alloy wheels (4) – 7-spoke design <i>front: 7J x 16 (205/55 tyres)</i> <i>rear: 7J x 16 (205/55 tyres)</i>	●	–	–
16" alloy wheels (4) – 5-spoke design <i>front: 7J x 16 (205/55 tyres)</i> <i>rear: 8J x 16 (225/50 tyres)</i>	○	●	–
17" alloy wheels (4) – 5-spoke design <i>front: 7.5J x 17 (225/45 tyres)</i> <i>rear: 8.5J x 17 (245/40 tyres)</i>	○	○	●

● Standard ○ Optional – Not available

Item

SLK 200 KOMPRESSOR
SLK 280
SLK 350

EXTERIOR			
Aerial on rear wing	●	●	●
Door mirrors – electrically adjustable and heated	●	●	●
Electro-hydraulic vario roof	●	●	●
Exhaust system with chrome tailpipes (2)	●	●	●
Fog lights	●	●	●
Remote boot release	●	●	●
Spare wheel – space saver (steel)	●	●	●
Tinted glass <i>Green</i>	●	●	●

Item

SLK 200 KOMPRESSOR
SLK 280
SLK 350

INTERIOR			
Air conditioning	●	●	●
Door sill panels with “Mercedes-Benz” lettering	●	●	●
Electric windows (2)	●	●	●
Interior lighting package	●	●	●
Mercedes-Benz Audio 20 Radio/CD with 9 speakers and telephone keypad	●	●	●
Multi-function leather-trimmed steering wheel with trip computer and gearshift	●	●	●
Outside temperature gauge	●	●	●
Service indicator “ASSYST”	●	●	●
Wind deflector (cloth)	●	●	●
Upholstery – Sienna fabric	●	●	●
Sports seats	●	●	●
Seat height adjusters	●	●	●
Steering column – manually adjustable for height and reach	●	●	–
Seats – electrically adjustable with memory, includes door mirrors and steering column	○	○	●

● Standard ○ Optional – Not available

Item

SLK 200 KOMPRESSOR
SLK 280
SLK 350

SECURITY AND SAFETY			
Airbags – dual-stage, driver and passenger	●	●	●
Airbags – head/thorax sidebags for driver and passenger	●	●	●
Alarm system with immobiliser and interior protection (MBSS3)	●	●	●
Anti-lock Braking System (ABS) with Brake Assist (BAS)	●	●	●
Automatic child seat recognition sensor <i>Works in conjunction with Mercedes-Benz child seats fitted with transponder</i>	●	●	●
Brake-pad wear indicator	●	●	●
Electronic Stability Programme (ESP®) with Acceleration Skid Control (ASR)	●	●	●
Headlamp Assist – automatic headlamp activation	●	●	●
High-level third brake lamp	●	●	●
Locking wheel bolts	●	●	●
Remote central locking	●	●	●
Roll-over protection	●	●	●
Seat belt pre-tensioners	●	●	●

Alloy Wheels



A revolution in style

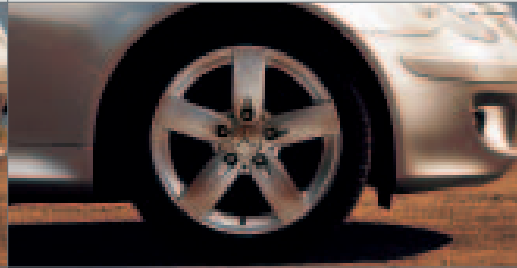
Alloy wheels give the finishing touch to your Mercedes-Benz. In addition to the standard equipment wheels, there are also eye-catching optional designs in a wide range of sizes and styles. You'll find all the standard and optional alloy wheels for this model listed here.

ALLOY WHEELS

– 16" 7-spoke design
front: 7J x 16 (205/55 tyres)
rear: 7J x 16 (205/55 tyres)



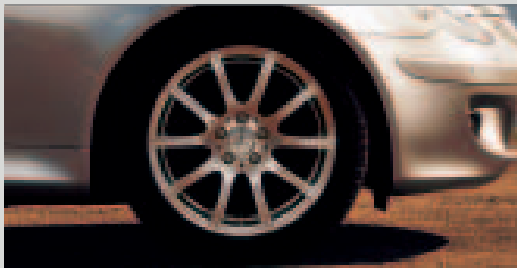
606 16" 5-spoke design
front: 7J x 16 (205/55 tyres)
rear: 8J x 16 (225/50 tyres)



607 17" 5-spoke design
front: 7.5J x 17 (225/45 tyres)
rear: 8.5J x 17 (245/40 tyres)



R35 17" 10-spoke design
front: 7.5J x 17 (225/45 tyres)
rear: 8.5J x 17 (245/40 tyres)



639 17" 5-spoke design
 (including sports suspension)
front: 7.5J x 17 (225/45 tyres)
rear: 8.5J x 17 (245/40 tyres)



782 18" AMG 5-spoke design
 (including sports suspension)
front: 7.5J x 18 (225/40 tyres)
rear: 8.5J x 18 (245/35 tyres)



SLK 200 KOMPRESSOR
 SLK 280
 SLK 350

Code	Item	Notes				Basic Price excl VAT (£)	Total Price incl VAT (£)
ALLOY WHEELS							
-	16" alloy wheels (4) – 7-spoke design <i>front: 7J x 16 (205/55 tyres)</i> <i>rear: 7J x 16 (205/55 tyres)</i>		●	-	-	-	-
606	16" alloy wheels (4) – 5-spoke design <i>front: 7J x 16 (205/55 tyres)</i> <i>rear: 8J x 16 (225/50 tyres)</i>		○	●	-	208.51	245.00
607	17" alloy wheels (4) – 5-spoke design <i>front: 7.5J x 17 (225/45 tyres)</i> <i>rear: 8.5J x 17 (245/40 tyres)</i>		-	-	●	-	-
			○	-	-	621.28	730.00
			-	○	-	463.83	545.00
R35	17" alloy wheels (4) – 10-spoke design <i>front: 7.5J x 17 (225/45 tyres)</i> <i>rear: 8.5J x 17 (245/40 tyres)</i>		○	-	-	689.36	810.00
			-	○	-	536.17	630.00
			-	-	○	157.45	185.00
639	17" alloy wheels (4) – 5-spoke design (including sports suspension) <i>front: 7.5J x 17 (225/45 tyres)</i> <i>rear: 8.5J x 17 (245/40 tyres)</i>		○	-	-	808.51	950.00
			-	○	-	642.55	755.00
			-	-	○	268.09	315.00
782	18" AMG alloy wheels (4) – 5-spoke design (including sports suspension) <i>front: 7.5J x 18 (225/40 tyres)</i> <i>rear: 8.5J x 18 (245/35 tyres)</i>		○	-	-	1,582.98	1,860.00
			-	○	-	1,370.21	1,610.00
			-	-	○	1,038.30	1,220.00

● Standard ○ Optional - Not available

Please contact your Retailer for a further choice of accessory wheels or pick up a copy of the Mercedes-Benz accessories brochure

Optional Equipment

Code	Item	Notes	SLK 200 KOMPRESSOR SLK 280 SLK 350			Basic Price excl VAT (£)	Total Price incl VAT (£)
SUSPENSION AND EXTERIOR							
772	AMG bodystyling		<input type="radio"/>	<input type="radio"/>	<input type="radio"/>	2,217.02	2,605.00
618	Headlamps – Bi-Xenon – with headlamp wash, dynamic range adjustment and cornering light function in fog lamps	<i>Includes headlamp wash (code 600); cornering light function not available with AMG bodystyling (code 772)</i>	<input type="radio"/>	<input type="radio"/>	<input type="radio"/>	621.28	730.00
600	Headlamp wash	<i>Standard with Bi-Xenon headlamps (code 618)</i>	<input type="radio"/>	<input type="radio"/>	<input type="radio"/>	165.96	195.00
213	Parameter steering – speed-sensitive power steering		<input type="radio"/>	<input type="radio"/>	<input type="radio"/>	174.47	205.00
486	Sports suspension	<i>On SLK 200 KOMPRESSOR only with wheel codes 606, 607 or R35</i>	<input type="radio"/>	<input type="radio"/>	<input type="radio"/>	157.45	185.00
TRANSMISSION							
423	5-speed automatic transmission with Tipfunction and Speedtronic cruise control		<input type="radio"/>	<input type="radio"/>	<input type="radio"/>	1,259.57	1,480.00
427/428	7G-Tronic 7-speed automatic transmission with Tipfunction and Speedtronic cruise control and gearshift buttons on steering wheel		<input type="radio"/>	<input type="radio"/>	<input type="radio"/>	1,540.43	1,810.00
PAINT, TRIM AND UPHOLSTERY							
-	Metallic paint		<input type="radio"/>	<input type="radio"/>	<input type="radio"/>	527.66	620.00
-	Leather upholstery – to reduce the possibility of rubbing, the side of each seat base is made of cloth		<input type="radio"/>	<input type="radio"/>	<input type="radio"/>	782.98	920.00
-	Nappa leather upholstery	<i>Only tobacco brown (code 844) available</i>	<input type="radio"/>	<input type="radio"/>	<input type="radio"/>	1,004.26	1,180.00

● Standard ○ Optional – Not available

SLK 200 KOMPRESSOR
 SLK 260
 SLK 350

Code	Item	Notes				Basic Price excl VAT (£)	Total Price incl VAT (£)
PAINT, TRIM AND UPHOLSTERY (CONTINUED)							
Y98	Roll-over bars covered in leather	<i>Only available with upholstery in leather, not available with wind deflector (code 283)</i>	<input type="radio"/>	<input type="radio"/>	<input type="radio"/>	400.00	470.00
Y98	Roll-over bars covered in Nappa leather or <i>designo</i> leather	<i>Only available with upholstery in Nappa leather or designo Nappa leather, not available with wind deflector (code 283)</i>	<input type="radio"/>	<input type="radio"/>	<input type="radio"/>	417.02	490.00
728	Vavona wood trim <i>Includes wood and leather trimmed steering wheel and gearshift</i>	<i>Not available with heated multi-function steering wheel (code 443)</i>	<input type="radio"/>	<input type="radio"/>	<input type="radio"/>	557.45	655.00
COMFORT							
403	Airscarf – neck level heating	<i>Only with heated seats (code 873) and leather upholstery</i>	<input type="radio"/>	<input type="radio"/>	<input type="radio"/>	297.87	350.00
721	Alustyle roof rack	<i>Only available with preparation for roof rack (code 726)</i>	<input type="radio"/>	<input type="radio"/>	<input type="radio"/>	242.55	285.00
301	Ashtray and cigarette lighter	<i>Replaces storage compartment in centre console and 12V socket in passenger footwell</i>	<input type="radio"/>	<input type="radio"/>	<input type="radio"/>		no cost option
309	Cupholders	<i>Replaces storage tray in upper centre console</i>	<input type="radio"/>	<input type="radio"/>	<input type="radio"/>		no cost option
275	Driver's seat and exterior mirrors – electrically adjustable with memory		<input type="radio"/>	<input type="radio"/>	<input checked="" type="radio"/>	565.96	665.00
241	Passenger's seat – electrically adjustable with memory	<i>Only with electrically adjustable driver's seat (code 275)</i>	<input type="radio"/>	<input type="radio"/>	<input checked="" type="radio"/>	323.40	380.00
873	Seats – heated		<input type="radio"/>	<input type="radio"/>	<input type="radio"/>	272.34	320.00
500	Door mirrors – electrically folding		<input type="radio"/>	<input type="radio"/>	<input type="radio"/>	165.96	195.00
231	Garage door opener – integrated in rear-view mirror <i>For questions regarding compatibility please call the Homelink Hotline Johnson Control (free phone 00800 0466 35465).</i>		<input type="radio"/>	<input type="radio"/>	<input type="radio"/>	157.45	185.00

● Standard ○ Optional – Not available

SLK 200 KOMPRESSOR
SLK 28-80
SLK 350

Code	Item	Notes				Basic Price excl VAT (£)	Total Price incl VAT (£)
COMFORT (CONTINUED)							
249	Automatically dimming rear-view mirror and driver's exterior mirror		<input type="radio"/>	<input type="radio"/>	<input type="radio"/>	221.28	260.00
875	Heated windscreen wash system		<input type="radio"/>	<input type="radio"/>	<input type="radio"/>	131.91	155.00
581	Luxury automatic climate control – includes digital display and two-zone control		<input type="radio"/>	<input type="radio"/>	<input type="radio"/>	370.21	435.00
443	Multi-function steering wheel – heated	<i>Only with heated seats (code 873); not available with Vavona wood trim (code 728)</i>	<input type="radio"/>	<input type="radio"/>	<input type="radio"/>	174.47	205.00
220	Parktronic <i>Audible and visible parking sensors – front and rear</i>		<input type="radio"/>	<input type="radio"/>	<input type="radio"/>	514.89	605.00
726	Preparation for roof carrying system		<input type="radio"/>	<input type="radio"/>	<input type="radio"/>	59.57	70.00
880	Remote control for roof operation integrated into key		<input type="radio"/>	<input type="radio"/>	<input type="radio"/>	76.60	90.00
283	Wind deflector – transparent	<i>Not available with roll-over bars covered in leather (code Y98)</i>	<input type="radio"/>	<input type="radio"/>	<input type="radio"/>	182.98	215.00
SECURITY AND SAFETY							
682	Fire extinguisher		<input type="radio"/>	<input type="radio"/>	<input type="radio"/>	68.09	80.00
345	Rain sensing wipers		<input type="radio"/>	<input type="radio"/>	<input type="radio"/>	76.60	90.00
477	Tyre pressure loss warning system		<input type="radio"/>	<input type="radio"/>	<input type="radio"/>	42.55	50.00

● Standard ○ Optional – Not available

SLK 200 KOMPRESSOR
 SLK 280
 SLK 350

Code	Item	Notes				Basic Price excl VAT (£)	Total Price incl VAT (£)
IN-CAR ENTERTAINMENT							
525	Mercedes-Benz Audio 50 APS <i>Includes radio, single CD drive and CD ROM navigation (including TMC) in centre console. Simultaneous use of navigation and audio CD possible with limited functionality unless CD changer (code 819) is ordered</i>		<input type="checkbox"/>	<input type="checkbox"/>	<input type="checkbox"/>	1,008.51	1,185.00
527	Cockpit Management and Navigation Display (COMAND) <i>Includes radio, single CD/DVD drive (region 2 DVDs only) with navigation covering most of Europe (including TMC), in centre console. DVD navigation drive in luggage compartment</i>		<input type="checkbox"/>	<input type="checkbox"/>	<input type="checkbox"/>	1,693.62	1,990.00
810	Surround sound system – harman/kardon LOGIC 7® <i>11 high-performance speakers</i>	<i>Only with Audio 50 APS (code 525) or COMAND (code 527)</i>	<input type="checkbox"/>	<input type="checkbox"/>	<input type="checkbox"/>	434.04	510.00
819	CD changer – 6 disc, in glove compartment		<input type="checkbox"/>	<input type="checkbox"/>	<input type="checkbox"/>	306.38	360.00
COMMUNICATIONS							
The following installations work in conjunction with the multi-function steering wheel and display. The phone cradle is mounted on the front centre armrest.							
388	Siemens mobile telephone with hands-free facility and telephone aerial on roof		<input type="checkbox"/>	<input type="checkbox"/>	<input type="checkbox"/>	672.34	790.00
386	Telephone pre-wiring with hands-free facility <i>A separate cradle for your mobile phone needs to be ordered as an accessory from your Retailer – see list of cradles available on page 16</i>	<i>It is recommended that a compatible handset is sourced prior to ordering a cradle</i>	<input type="checkbox"/>	<input type="checkbox"/>	<input type="checkbox"/>	365.96	430.00

● Standard ○ Optional – Not available

Retailer-fit Accessories

The equipment listed on pages 15 and 16 will be fitted by your Mercedes-Benz Retailer. Please consult your Retailer for a further choice of accessories or pick up a copy of the Mercedes-Benz accessories brochure for more information. Please note that the quoted price does not include fitting, labour rate or any additional subscription fees that may apply.

Code	Item	Notes	Basic Price excl VAT (£)	Total Price incl VAT (£)
EXTERIOR AND INTERIOR				
B67812108	Basic carrier bars	<i>Can only be fitted to vehicles ordered with preparation for roof carrying system (code 726)</i>	356.60	419.00
B67824019	CD Changer with MP3 functionality – 6 disc, in glove compartment		283.40	333.00
B66881222	Chrome highlight for radiator grille		69.79	82.00
B66881800	Front spoiler lip – excludes painting	<i>Cannot be fitted if AMG bodystyling (code 772) is ordered or on SLK 55 AMG</i>	150.64	177.00
B66883300	Rear apron trim – excludes painting	<i>Cannot be fitted if AMG bodystyling (code 772) is ordered or on SLK 55 AMG</i>	125.11	147.00
B67824209	iPod integration kit	<i>iPod not included, can only be fitted if COMAND (code 527) is ordered</i>	146.38	172.00
B67824207	iPod holder for glove box	<i>Can only be fitted if iPod integration kit (code B67824209) is ordered</i>	9.36	11.00
B66528221	Mudflaps front	<i>Cannot be fitted if AMG bodystyling (code 772) is ordered or on SLK 55 AMG</i>	36.60	43.00
B66528222	Mudflaps rear	<i>Cannot be fitted if AMG bodystyling (code 772) is ordered or on SLK 55 AMG</i>	36.60	43.00
B67823815	Quickparc – audible reversing aid		550.64	647.00
B66648059	Shallow boot tub with SLK lettering		60.43	71.00
B66950068	SLK bag for boot		121.70	143.00
B67812224	Wind deflector – transparent	<i>Cannot be fitted if roll-over bars covered in leather (code Y98) are ordered</i>	237.45	279.00
Q35010300	TRACKER Retrieve – vehicle tracking device	<i>Subscription fees are available separately</i>	188.94	222.00
Q35010110	TRACKER Monitor – vehicle tracking device with automatic notification	<i>Subscription fees are available separately</i>	273.19	321.00

Code	Item	Notes	Basic Price excl VAT (£)	Total Price incl VAT (£)
EXTERIOR AND INTERIOR (CONTINUED)				
Q35010500	TRACKER Horizon – GPS and radio wave based vehicle tracking device	<i>Subscription fees are available separately</i>	457.02	537.00
Q35010800	TRACKER Echo – European tracking system	<i>Subscription fees are available separately</i>	491.06	577.00
Q82203000	Road Angel Compact	<i>Subscription fees are available separately</i>	169.36	199.00
TELEPHONE CRADLES				
<p><i>For the items listed below, telephone pre-wiring with hands-free facility and telephone aerial (code 386) must be ordered. It is recommended that a compatible handset is sourced prior to ordering a cradle. Please consult your Retailer regarding necessary software versions of your phone. These installations work in conjunction with the multi-function steering wheel and display. The phone cradle is mounted in the front centre armrest.</i></p>				
B67875835	Telephone cradle for Nokia 6100/6610/6610i/7250i handset		111.49	131.00
B67875822	Telephone cradle for Nokia 6210/6310/6310i handset		111.49	131.00
B67875842	Telephone cradle for Nokia 6020/6021 handset		111.49	131.00
B67875846	Telephone cradle for Nokia 6220/6230/6230i handset		111.49	131.00
B67875847	Telephone cradle for Nokia 6820/6822 handset		111.49	131.00
B67875859	Telephone cradle for Nokia 3120 handset		111.49	131.00
B67875841	Telephone cradle for Siemens CX65/CXT65/CX65V/CX70/CXT70/CX70V handset		111.49	131.00
B67875834	Telephone cradle for Siemens S65/SP65 handset		111.49	131.00
B67875852	Telephone cradle for Siemens SK65 handset		111.49	131.00
B67875853	Telephone cradle for Siemens M75 handset		111.49	131.00
B67875854	Telephone cradle for Siemens CX75 handset		111.49	131.00
B67875830	Telephone cradle for Sony Ericsson T610/T630 handset		111.49	131.00
B67875836	Telephone cradle for Sony Ericsson K700i handset		111.49	131.00
B67875860	Telephone cradle for Sony Ericsson K750i handset		111.49	131.00

designo



As individual as you are

With *designo*, it takes just a few carefully chosen ingredients to turn your Mercedes-Benz into an individual work of art. The combination of our extensive range, your personal tastes and the naturally varying appearance of our materials makes every *designo* creation a true one-off.

Featuring exclusive colours and exquisite materials, the *designo* options for your Mercedes-Benz include fine wood trim, sumptuous Nappa leather upholstery or Alcantara/Nappa leather upholstery, stunning exterior paint finishes and leather-covered trim parts. Used alone, they add eye-catching highlights to your Mercedes-Benz. Combined, they give it a truly individual look.

Please contact your Retailer for more information or pick up a copy of the *designo* brochure.

Code	Item	Notes	<i>SUK 200 KOMPRESSOR</i> <i>SUK 260</i> <i>SUK 350</i>			Basic Price excl VAT (£)	Total Price incl VAT (£)
<i>designo</i> PAINT, TRIM AND UPHOLSTERY							
-	<i>designo</i> metallic paint		<input type="radio"/>	<input type="radio"/>	<input type="radio"/>	987.23	1,160.00
-	<i>designo</i> varicolor/mystic paint		<input type="radio"/>	<input type="radio"/>	<input type="radio"/>	1,497.87	1,760.00
-	<i>designo</i> chromaflair paint		<input type="radio"/>	<input type="radio"/>	<input type="radio"/>	3,182.98	3,740.00
X11	<i>designo</i> Nappa leather upholstery – single tone black <i>Consisting of: seat and door centre panels in designo black Nappa leather – quilted; seat side bolsters, head restraints, armrests in centre console and doors, map pockets in doors, handbrake lever and gearshift – all in designo Nappa leather black, Velour floormats in black with black designo piping, designo badge in seat backrest and floormats</i>	<i>Only with heated seats (code 873) and interior upholstery in black (code 871)</i>	<input type="radio"/>	<input type="radio"/>	<input type="radio"/>	1,863.83	2,190.00
X20	<i>designo</i> Nappa leather/Alcantara upholstery – single tone black <i>Consisting of: seat centre panels in designo Alcantara black – quilted; door centre panels in designo Nappa leather black – quilted; seat side bolsters, head restraints, armrests in centre console and doors, map pockets in doors, handbrake lever and gearshift all in designo Nappa leather black, Velour floormats in black with black designo piping, designo badge in seat backrest and floormats</i>	<i>Only with heated seats (code 873) and interior upholstery in black (code 871)</i>	<input type="radio"/>	<input type="radio"/>	<input type="radio"/>	1,863.83	2,190.00
X21	<i>designo</i> Nappa leather/Alcantara upholstery – single tone alpaca grey <i>Consisting of: seat centre panels in designo Alcantara alpaca grey – quilted; door centre panels in designo Nappa leather Alpaca grey – quilted; seat side bolsters, head restraints, armrest in doors, map pockets in doors in Nappa leather Alpaca grey; handbrake lever and gearshift, armrest in centre console in designo Nappa leather black, Velour floormats in black with black designo piping, designo badge in seat backrest and floormats</i>	<i>Only with heated seats (code 873) and interior upholstery in alpaca grey (code 878)</i>	<input type="radio"/>	<input type="radio"/>	<input type="radio"/>	1,863.83	2,190.00

● Standard ○ Optional – Not available

SLK 200 KOMPRESSOR
SLK 280
SLK 350

Code	Item	Notes				Basic Price excl VAT (£)	Total Price incl VAT (£)
<i>designo</i> PAINT, TRIM AND UPHOLSTERY (CONTINUED)							
-	<i>designo</i> Nappa leather upholstery – two-tone black/chosen <i>designo</i> colour <i>Consisting of: seat and door centre panels in designo black Nappa leather – quilted; seat side bolsters, head restraints, armrests in doors in designo Nappa leather in chosen colour, map pockets in doors, handbrake lever and gearshift in designo black Nappa leather, Velour floormats in black with black designo piping, designo badge in seat backrest and floormats</i>	<i>Only with heated seats (code 873) and interior upholstery in black (code 871)</i>	<input type="checkbox"/>	<input type="checkbox"/>	<input type="checkbox"/>	1,863.83	2,190.00
-	<i>designo</i> wood trim		<input type="checkbox"/>	<input type="checkbox"/>	<input type="checkbox"/>	408.51	480.00
Y97	<i>designo</i> leather covered trim parts <i>Consisting of: trim strips in dashboard, door pull handle inserts and handbrake lever insert covered in chosen designo Nappa leather</i>	<i>Only with designo leather upholstery, same colour as designo leather upholstery</i>	<input type="checkbox"/>	<input type="checkbox"/>	<input type="checkbox"/>	255.32	300.00
Y96	<i>designo</i> two-tone black/chosen <i>designo</i> colour leather-trimmed steering wheel and gearshift	<i>Only available with designo two-tone leather upholstery, same colour as designo leather upholstery</i>	<input type="checkbox"/>	<input type="checkbox"/>	<input type="checkbox"/>	306.38	360.00
Y95	<i>designo</i> wood and leather trimmed steering wheel	<i>Only with designo wood trim, same colour as designo wood trim, not available with heated multi-function steering wheel (code 443)</i>	<input type="checkbox"/>	<input type="checkbox"/>	<input type="checkbox"/>	527.66	620.00
Y94	<i>designo</i> wood and leather trimmed gearshift	<i>Only with designo wood trim, same colour as designo wood trim</i>	<input type="checkbox"/>	<input type="checkbox"/>	<input type="checkbox"/>	182.98	215.00
Y83	<i>designo</i> Alcantara roof lining in anthracite		<input type="checkbox"/>	<input type="checkbox"/>	<input type="checkbox"/>	825.53	970.00
Y85	<i>designo</i> Alcantara roof lining in alpaca grey		<input type="checkbox"/>	<input type="checkbox"/>	<input type="checkbox"/>	825.53	970.00
Y98	Roll-over bars covered in <i>designo</i> leather	<i>Only available with upholstery in designo leather, not available with wind deflector (code 283)</i>	<input type="checkbox"/>	<input type="checkbox"/>	<input type="checkbox"/>	417.02	490.00

● Standard ○ Optional – Not available

AMG



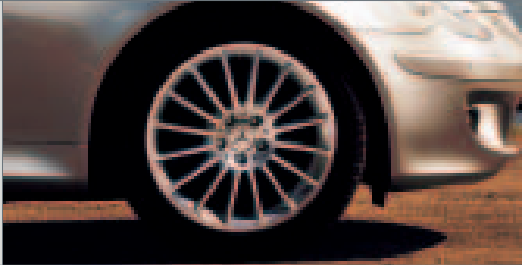
Straight from the heart

Few names ignite the passions of a performance enthusiast like that of AMG. Through a long line of memorable racing successes and even more memorable road cars, AMG has won countless fans and earned a reputation for the very best in high performance motoring.

It's a reputation the current AMG models can only enhance. With their breathtaking performance and excellent road manners, they make every journey an occasion to savour.

If you'd like to sample this performance potential for yourself, ask your Retailer about the AMG Experience. It gives you the chance to put a range of AMG models through their paces in the company of a trained driving instructor.

Standard Equipment SLK 55 AMG

Code	Item	Notes	Basic Price excl VAT (£)	Total Price incl VAT (£)
ALLOY WHEELS				
-	18" alloy wheels – exclusive AMG multi-spoke design <i>front: 7.5J x 18 (225/40 tyres)</i> <i>rear: 8.5J x 18 (245/35 tyres)</i>			standard

EXTERIOR AND TRANSMISSION

7G-Tronic 7-speed automatic transmission with Tipfunction, AMG Speedshift function with steering wheel gearshift buttons and Speedtronic cruise control

Aerial on rear wing

AMG bodystyling with exclusive SLK 55 AMG front apron

AMG high-performance braking system with composite front brake discs

AMG spoiler lip on the boot lid

AMG sports exhaust system with twin chrome tailpipes

AMG sports suspension

Door mirrors – electrically operated and heated

Electro-hydraulic vario roof

Headlamps – Bi-Xenon – with headlamp wash and dynamic range adjustment

Heated wind screen wash system

Metallic paint

Remote boot release


Spare wheel – space saver (steel)

Tinted glass – green

INTERIOR
Air conditioning
AMG door sill panels
AMG instrument cluster
AMG Sports multi-function leather-trimmed steering wheel with trip computer and gearshift
AMG Sports seats
Electric windows (2)
Interior lighting package
Mercedes-Benz Audio 20 Radio/CD with 9 speakers and telephone keypad
Outside temperature gauge
Seat height adjusters
Seats – electrically adjustable with memory, including door mirrors and steering column
Seats – heated
Service indicator “ASSYST”
Upholstery – AMG Nappa leather
Wind deflector (cloth)

SECURITY & SAFETY
Airbags – dual-stage, driver and passenger
Airbags – head/thorax sidebags for driver and passenger
Alarm system with immobiliser and interior protection (MBSS3)
Anti-lock Braking System (ABS) with Brake Assist (BAS)
Automatic child seat recognition sensor <i>Works in conjunction with Mercedes-Benz child seats fitted with transponder</i>
Brake-pad wear indicator
Electronic Stability Programme (ESP®) with Acceleration Skid Control (ASR)
Headlamp Assist – automatic headlamp activation
High-level third brake lamp
Locking wheel bolts
Remote central locking
Roll-over protection
Seat belt pre-tensioners

Optional Equipment SLK 55 AMG

Code	Item	Notes	Basic Price excl VAT (£)	Total Price incl VAT (£)
ALLOY WHEELS, SUSPENSION AND EXTERIOR				
782	18" alloy wheels – AMG 5-spoke design (including sports suspension) <i>front: 7.5J x 18 (225/40 tyres)</i> <i>rear: 8.5J x 18 (245/35 tyres)</i>		no cost option	
213	Parameter steering – speed-sensitive power steering		174.47	205.00

Code	Item	Notes	Basic Price excl VAT (£)	Total Price incl VAT (£)
<i>designo</i> PAINT, TRIM AND UPHOLSTERY				
-	<i>designo</i> metallic paint		459.57	540.00
-	<i>designo</i> varicolor/mystic paint		970.21	1,140.00
-	<i>designo</i> chromaflair paint		2,655.32	3,120.00
-	<i>designo</i> Nappa leather upholstery – two-tone black/chosen <i>designo</i> colour Consisting of: AMG sports seats with seat and door centre panels in <i>designo</i> black Nappa leather; seat side bolsters, head restraints, armrests in doors in <i>designo</i> Nappa leather in chosen colour, map pockets in doors, handbrake lever and gearshift in <i>designo</i> black Nappa leather, Velour floor mats in black with black <i>designo</i> piping, AMG badge in seat backrest and <i>designo</i> badge floor mats		893.62	1,050.00
-	<i>designo</i> wood trim		408.51	480.00
Y97	<i>designo</i> leather covered trim parts Consisting of: trim strips in dashboard, door pull handle inserts and handbrake lever insert covered in chosen <i>designo</i> Nappa leather	Only with <i>designo</i> leather upholstery, same colour as <i>designo</i> leather upholstery	255.32	300.00
Y94	<i>designo</i> wood and leather trimmed gearshift	Only with <i>designo</i> wood trim, same colour as <i>designo</i> wood trim	182.98	215.00
Y83	<i>designo</i> Alcantara roof lining in anthracite		825.53	970.00
Y85	<i>designo</i> Alcantara roof lining in alpaca grey		825.53	970.00
Y98	Roll-over bars covered in Nappa leather or <i>designo</i> Nappa leather	Not available with wind deflector (code 283)	417.02	490.00

Code	Item	Notes	Basic Price excl VAT (£)	Total Price incl VAT (£)
COMFORT				
403	Airscarf – neck level heating		297.87	350.00
721	Alustyle roof rack	<i>Only available with preparation for roof rack (code 726)</i>	242.55	285.00
301	Ashtray and cigarette lighter	<i>Replaces storage compartment in centre console and 12V socket in passenger footwell</i>		no cost option
249	Automatically dimming rear-view mirror and driver's exterior mirror		221.28	260.00
309	Cupholders	<i>Replaces storage tray in upper centre console</i>		no cost option
500	Door mirrors – electrically folding		165.96	195.00
231	Garage door opener – integrated in rear-view mirror <i>For questions regarding compatibility please call the Homelink Hotline Johnson Control (free phone 00800 0466 35465).</i>		157.45	185.00
875	Heated windscreen wash system		131.91	155.00
581	Luxury automatic climate control – includes digital display and two-zone control		370.21	435.00
220	Parktronic <i>Audible and visible parking sensors – front and rear</i>		514.89	605.00
726	Preparation for roof carrying system		59.57	70.00
880	Remote control for roof operation integrated into key		76.60	90.00
283	Wind deflector – transparent	<i>Not available with roll-over bars covered in leather (code Y98)</i>	182.98	215.00

Code	Item	Notes	Basic Price excl VAT (£)	Total Price incl VAT (£)
SECURITY AND SAFETY				
682	Fire extinguisher		68.09	80.00
345	Rain sensing wipers		76.60	90.00
477	Tyre pressure loss warning system		42.55	50.00
IN-CAR ENTERTAINMENT				
525	Mercedes-Benz Audio 50 APS <i>Includes radio, single CD drive and CD-ROM navigation in centre console Simultaneous use of navigation and audio CD possible with limited functionality unless CD changer (code 819) is ordered</i>		1,008.51	1,185.00
527	Cockpit Management and Navigation Display (COMAND) <i>Includes radio, single CD/DVD drive (region 2 DVDs only) in centre console and DVD navigation covering most of Europe in luggage compartment</i>		1,693.62	1,990.00
810	Surround sound system – harman/kardon LOGIC 7® <i>11 high-performance loudspeakers</i>	<i>Only with Mercedes-Benz Audio 50 APS (code 525) or COMAND (code 527)</i>	434.04	510.00
819	CD changer – 6 disc, in glove compartment		306.38	360.00

Code	Item	Notes	Basic Price excl VAT (£)	Total Price incl VAT (£)
COMMUNICATIONS				
The following installations work in conjunction with the multi-function steering wheel and display. The phone cradle is mounted on the front centre armrest.				
388	Siemens mobile telephone with hands-free facility and telephone aerial on roof		672.34	790.00
386	Telephone pre-wiring with hands-free facility <i>A separate cradle for your mobile phone needs to be ordered as an accessory from your Retailer - see page 16</i>	<i>It is recommended that a compatible handset is sourced prior to ordering a cradle</i>	365.96	430.00

Technical Specifications

	PETROL ENGINES						AMG (PETROL)
Model	SLK 200 KOMPRESSOR 171442		SLK 280 171454		SLK 350 171456		SLK 55 AMG 171473
ENGINE							
Capacity (cc)	1796		2966		3498		5439
Arrangement/Cylinders/Valves	inline/4/16		V/6/24		V/6/24		V/8/24
Power (hp at rpm)	163/5500		231/6000		272/6000		360/5750
Torque (Nm at rpm)	240/3000		300/3500		350/2400-5000		510/4000
TRANSMISSION							
6-speed manual	●		●		●		-
5-speed automatic	○		-		-		-
7G-Tronic 7-speed automatic	-		○		○		●
	<i>man.</i> <i>auto.</i>		<i>man.</i> <i>auto.</i>		<i>man.</i> <i>auto.</i>		<i>auto.</i>
PERFORMANCE							
Acceleration 0-62 mph (secs)	7.9	8.3	6.3	6.2	5.6	5.5	4.9
Top speed (mph)	143	140	155*	155*	155*	155*	155*

● Standard ○ Optional - Not available

*Electronically limited

The above figures are correct at time of going to print. Please refer to the government website for latest data – www.vca.gov.uk

	PETROL ENGINES						AMG (PETROL)	
Model	SLK 200 KOMPRESSOR 171442		SLK 280 171454		SLK 350 171456		SLK 55 AMG 171473	
	<i>man.</i>	<i>auto.</i>	<i>man.</i>	<i>auto.</i>	<i>man.</i>	<i>auto.</i>	<i>auto.</i>	
FUEL CONSUMPTION¹								
Urban	(mpg)	22.4	22.6	20.5	21.9	18.2	19.9	15.9
Extra Urban ²	(mpg)	43.5	42.2	39.2	40.4	36.2	36.2	32.1
Combined	(mpg)	32.5	32.1	29.1	30.4	26.7	28.0	23.5
CO₂ EMISSION (g/km)								
Emissions management	EU4		EU4		EU4		EU4	
Standard wheels	209	211	231	222	255	242	288	
Alloy wheels – code 606	209	211	231	222	–	–	–	
Alloy wheels – code 607	218	221	236	227	255	242	–	
Alloy wheels – code R35	218	221	236	227	255	242	–	
Alloy wheels – code 639	218	221	236	227	255	242	–	
Alloy wheels – code 782	218	221	236	227	255	242	288	
INSURANCE								
Group rating	16A		17A		18A		19D	

¹Fuel consumption based on standard specification

²EUDC – Extra Urban Driving Cycle. Testing procedures adhere to EU Directive 93/116

The above figures are correct at time of going to print. Please refer to the government website for latest data – www.vca.gov.uk

Road Fund Licence

As of 1 March 2001, all new vehicle registrations are subject to a new type of Vehicle Excise Duty (Road Fund Licence). This varies in accordance with the vehicle fuel type and CO₂ emissions. The table below shows the bands (A–G) created by the DVLA and the corresponding Road Fund Licence as of 23 March 2006. These prices may reduce the On-The-Road Price on page 5 which reflects the highest band rate. Please refer to page 29 to identify the CO₂ emission level for the engine and transmission of your choice and adjust the On-The-Road Price accordingly.

Band	CO₂ Emission	Petrol Engines (£)	Diesel Engines (£)
A	up to 100 g/km	0.00	0.00
B	101 to 120 g/km	40.00	50.00
C	121 to 150 g/km	100.00	110.00
D	151 to 165 g/km	125.00	135.00
E	166 to 185 g/km	150.00	160.00
F	186 to 225 g/km	190.00	195.00
G	over 225 g/km	210.00	215.00

The last word

Warranty and breakdown cover

Every Mercedes-Benz comes with a 3-year unlimited mileage warranty against manufacturing or material defects¹. What's more, it's also covered by MobiloLife – our unique 30-year pan-European breakdown assistance package and 30-year warranty against perforation due to corrosion from the inside out¹.

Service Contracts

For even greater peace of mind, there are our Mercedes-Benz Service Contracts: Mercedes Service (service only) and Mercedes Service Plus (service, maintenance and repair). They provide a simple system of risk-free fixed monthly payments and are designed to make servicing as economical and convenient as possible. Leaving you free to enjoy yourself. Call into your local Retailer to find out more about Service Contracts. Alternatively call Mercedes-Benz Service Contracts on 0870 242 6200.

Mercedes-Benz Finance

Everyone has their own individual requirements when it comes to finance; Mercedes-Benz Finance has the expertise to ensure you find the most appropriate option, whether you are considering a new or used vehicle, and whether you are a private customer, a business user or a corporate fleet buyer. A choice of tailor-made finance packages are available as well as additional services such as motor insurance and Credit Protection schemes.

Factory collection

As an alternative to delivery via your local Retailer, you can choose to collect your Mercedes-Benz from one of our Customer Collection Centres in Germany. There you can go on a tour of the plant where your car was made, before taking possession of your new car and driving it home in person. It's a truly memorable way to start the ownership experience. There is no extra cost for factory collection over standard delivery. If you are interested in this option, please ask your Retailer for further information.

¹ Subject to full Terms and Conditions, available upon request

Prices effective from 1 April, 2006. Information correct at time of going to print,
prices and specifications are subject to change without prior notice.

MB211/0406

DaimlerChrysler UK Ltd., Tongwell, Milton Keynes, MK15 8BA

www.mercedes-benz.co.uk